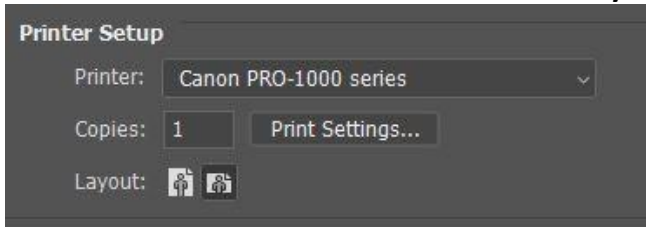


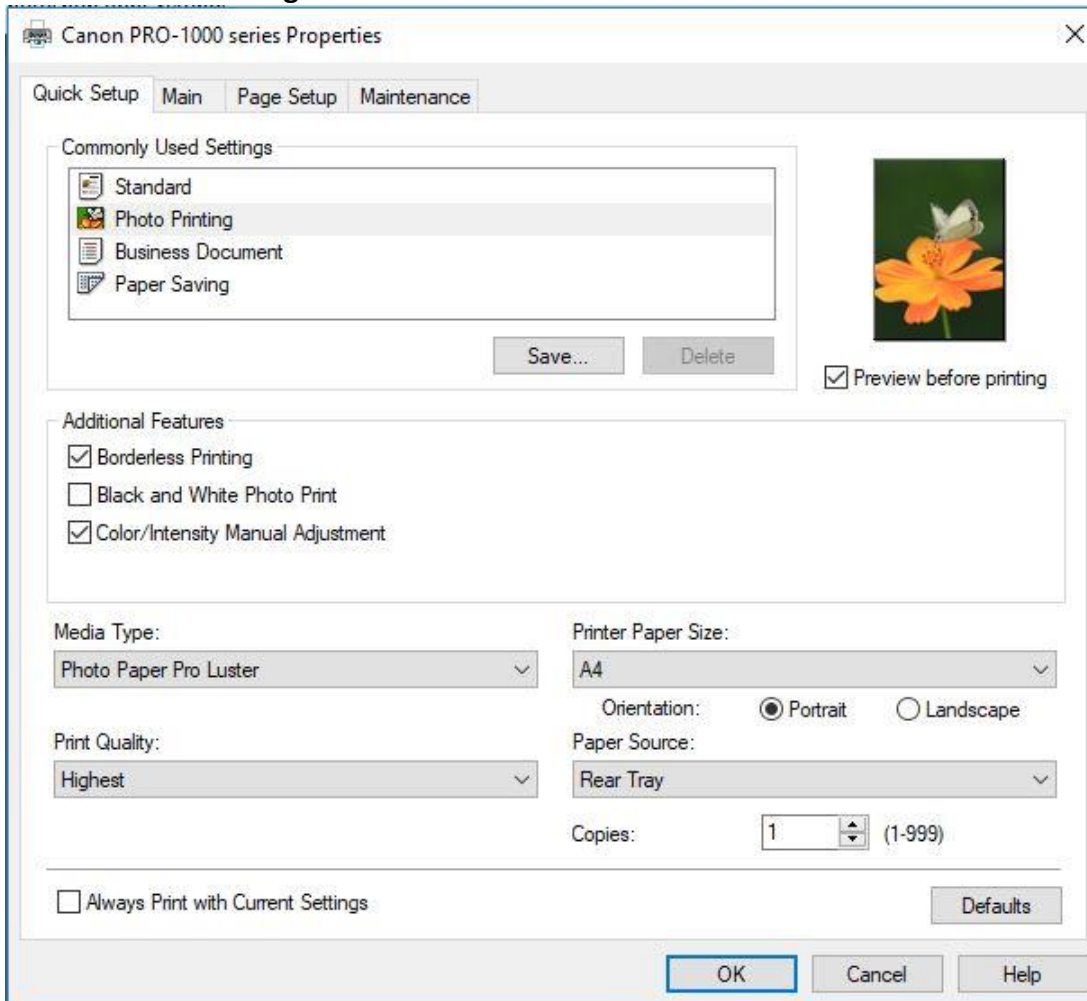
## Printer Canon Pro 1000 Setup

## Print Setting

1. Resize your image
2. Bring you finished image BACK into Camera Raw – Check your Blacks & Whites (Alt+left mouse button – bring slider to correct position)
3. Output sharpener with Nik filters (Set correct setting of your printer)
4. Go to PRINT - Printer setup opens
5. Check the correct Printer is selected from your list



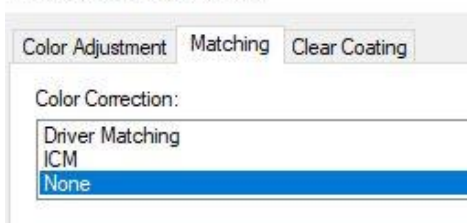
### 6. Go to Print Setting



### 7. Click on/off Colour/Intensity Manual Adjustment new window opens

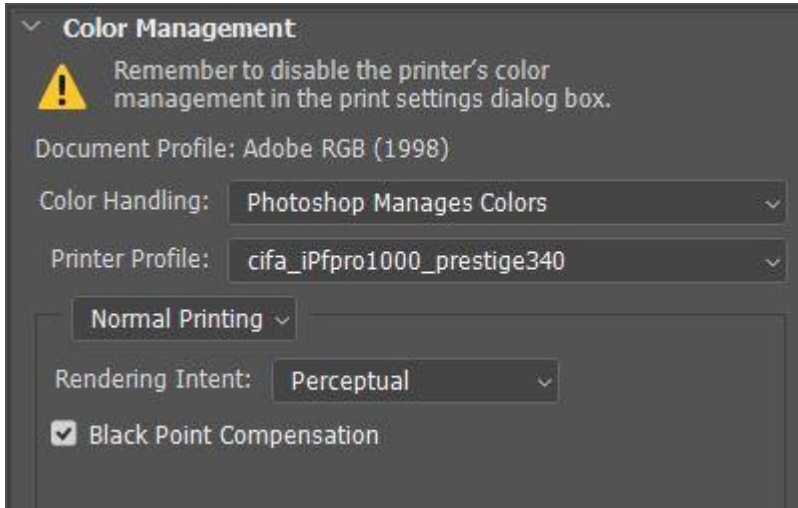
### 8. Manual Colour Adjustment

Manual Color Adjustment



9. Go to Matching – Click on NONE (This is important to have clicked for your ICC Profile to work)
10. Check all other setting ie: Media Type, Paper size, Print quality, Preview, Orientation.

**11. Next Section is Colour Management**

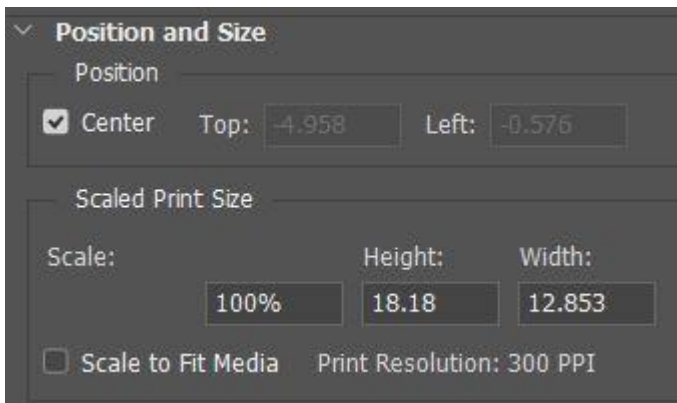


**12. Remember to set Colour Handling**

**13. Select you Paper Profile (you can download from your paper manufacture)**

**14. Select other setting as above.**

**15.**



**16.**



**Have all 3 clicked**

**Check over all your setting before you Press Print**

<u>Resizing:</u>	<u>Up</u>	<u>When resizing from master File:</u>	<u>Resizing:</u>	<u>Down</u>
	<u>Setting for larger File</u>			<u>Setting for A4</u>
	Width: .....	24.533 mm		297 mm
	Height: .....	16.373 mm		210 mm
	Resolution: .....	300	Pixels/Inch	594.118
<b>Resample:</b>	<b>Turn on (only when upsizing)</b>			<b>Do NOT turn on</b>

**While every care is taken in drawing up the Settings for Printing (This is the setting I use on a Canon Pro 1000 A2 printer) the information given in this document is, to the best of my knowledge, true and complete.**